

PMM3000 Multi-Display Command Post Centralised monitoring. Compatible and reliable.

Features and Benefits

1. Centralised monitoring compatible with all kinds of PLMs, ERPs, SCADAs and HMIs, as well as with standard industrial communications networks.
2. Quick and easy installation and cabling. Flexible architecture to cater for future needs.
3. Robust, accessible and adjustable ergonomic design. Long-lasting protection against corrosion. Concealed cabling and storage tray. Clean and tidy work station.
4. User restricted access and control via USB key.
5. No need to move from one monitor to another, reducing risks and increasing the overall view of the plant.
6. Centralised alarms and system messages.

The PMM3000 allows viewing multiple displays and simultaneous processes

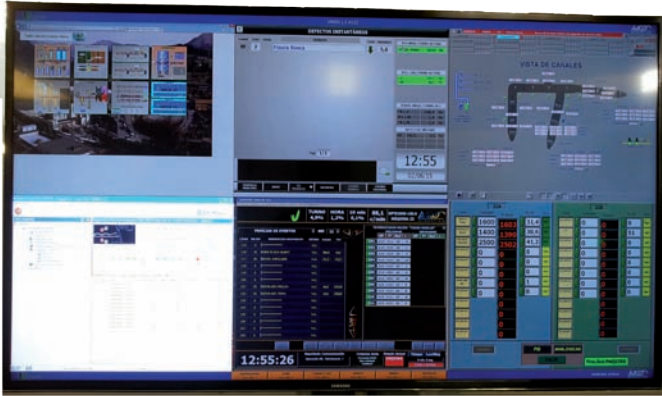


The engineering that fits your needs



PMM3000 Multi-Display Command Post

Centralised monitoring. Compatible and reliable.



Large-format screen.



Control room.

A panoramic view

A 48" large-format screen compliant with VESA. It allows viewing multiple displays and simultaneous processes, as well as managing data and alarms, among others.

Interface with different industrial buses and plant software (SCADAs, HMIs, PLMs, ERPs). Separate keyboard and mouse, avoiding any physical contact with the screen. An environment that is fully configurable both mechanically and visually, with easy accessibility.

Straightforward, compatible and reliable

Based on technology compatible with Windows, Apple, and Linux, as well as with other operating systems. Independent industrial-type processor, with a robust system, operating in "slave" mode, making it a standalone system regarding other control systems, allowing for hot plugging/unplugging with onsite networks and computers. Scalable and robust architecture for supervision and control.

Centralised systems

Plant servers mounted in a security cabinet, with centralised cabling, making it easy to clean, keep tidy and perform software maintenance.

Extra options

- Integration of flowcharts and physical control panels with keypads.
- Compatible with the system of centralised posts for 19" screens.
- Version available for left-handed users.



The engineering that fits your needs

Industrialdea Pb. 3-6. 01400 Llodio (Álava) Spain.
T +34 94 6725736 F +34 94 6726108
sales@avacon.com - avacon.com